



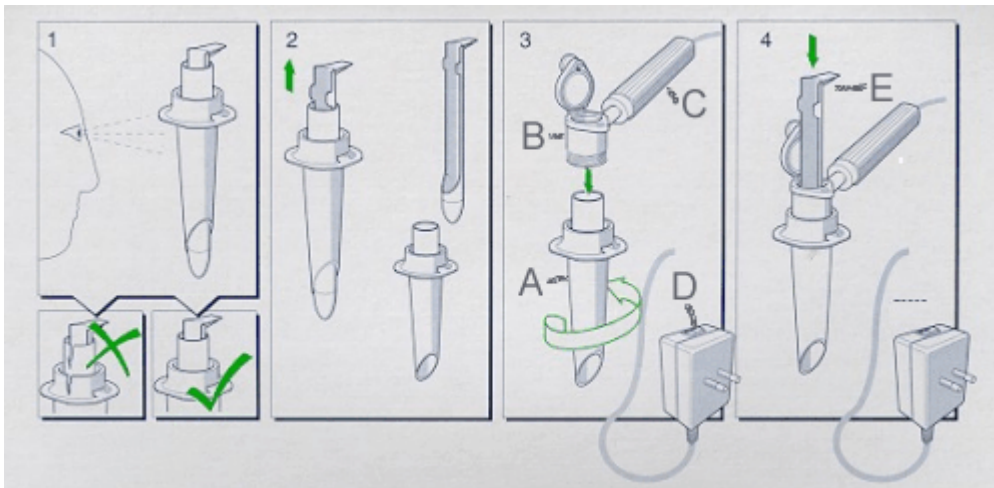
CAPITAL MEDICAL SUPPLIES PTY LTD
71 HEFFERNAN STREET
MITCHELL. ACT. 2911

PH. 02 62415511
FAX. 02 62417538
E-MAIL. info@capitalmedicalsupplies.com.au
ABN. 33 008 592 836

The KleenSpec Sigmoidoscope

The KleenSpec® Sigmoidoscope (Figure 1) and Anoscope available from [CAPITAL MEDICAL SUPPLIES](http://www.capitalmedicalsupplies.com.au) feature plastic disposable scopes for insertion into the anus and rectum. Once inserted the obturator (Figure 2) is removed and examination can be done.

The complete system (Figure 3) provides a number of functions. Light is provided by a bulb in the light handle (C) and piped by fiber optics through the illumination head (B) and down the scope (A). Power for the light is provided by a separate transformer. (D) The illumination head also has an air-tight focusing lens which may be flipped in place after removal of the obturator (Figure 2 and E in Figure 4). Insertion of instruments may be done with the lens flipped open. The illumination head also provides a means to pump in air to expand the intestinal tract (not shown).



The Anoscope and Sigmoidoscope may be used without the illumination head but for full use the illumination head, light handle, and transformer are also required. The complete unit is also available from [CAPITAL MEDICAL SUPPLIES](http://www.capitalmedicalsupplies.com.au).

The head and light source are interchangeable with the non-disposable scopes by the same instrument maker, **Welsh Allyn, Ltd**